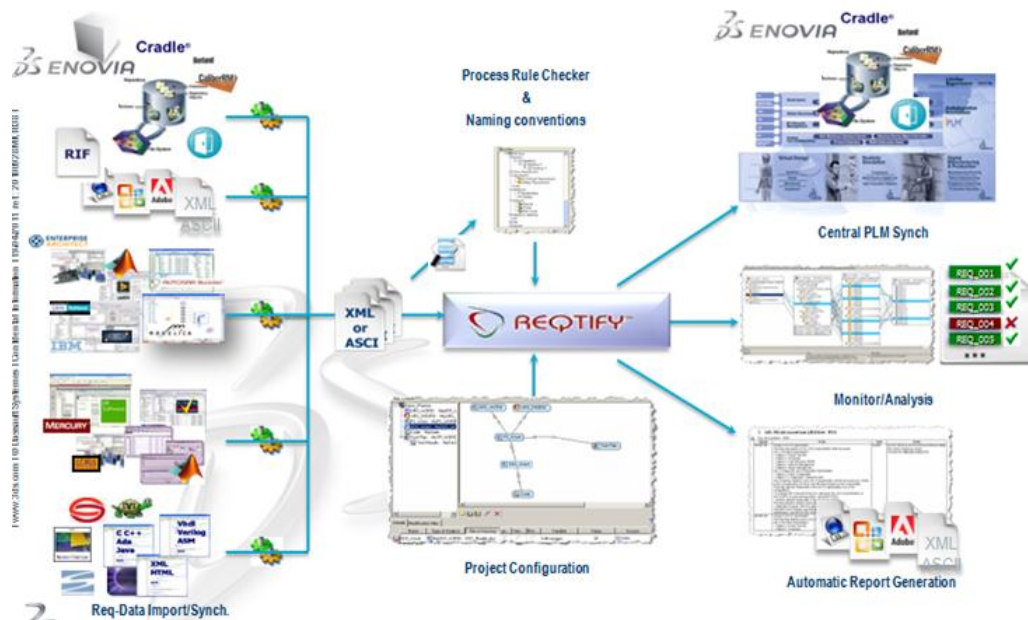




REQTIFY™

Welcome to Reqtify 2016

Reqtify 2016 is a new major release of Reqtify product line containing new features, new interfaces and minor enhancements, interface updates and fixes.



Reqtify is an interactive requirement traceability and impact analysis tool which can trace requirements from system, program and project levels to the entire levels of your software or hardware component development lifecycle. Reqtify can interface with requirement-related information in a wide variety of data formats, document types and file formats. These can include corporate requirement repositories such as IBM-Rational DOORS™ and RequisitePro™, Borland CaliberRM™, 3SL Cradle™, office type documents such as Microsoft Word, Excel, Adobe FrameMaker and PDF, UML Design tools such as ARTiSAN Studio, Enterprise Architect, CAD tools such as Simulink, Code files such as C, Ada, C++, Java or VHDL as well as information in standard text format, Html, XML or ReqIF.

This document is for information and instruction purposes and is reserving the right to make changes in specifications and other information contained in this publication without prior notice, and the reader should, in all cases, consult Dassault Systèmes to determine whether any changes have been made.

The terms and conditions governing the sale and licensing of products are set forth in a separate written agreements. No representation or other affirmation of fact contained in this publication shall be deemed to be a warranty or give rise to any liability of Dassault Systèmes and its affiliates whatsoever.

DASSAULT SYSTÈMES AND ITS AFFILIATES MAKE NO WARRANTY OF ANY KIND WITH REGARD TO THIS MATERIAL INCLUDING, BUT NOT LIMITED TO, THE IMPLIED WARRANTIES OF MERCHANTABILITY AND FITNESS FOR A PARTICULAR PURPOSE.

DASSAULT SYSTÈMES AND ITS AFFILIATES SHALL NOT BE LIABLE FOR ANY INCIDENTAL, INDIRECT, SPECIAL, OR CONSEQUENTIAL DAMAGES WHATSOEVER (INCLUDING BUT NOT LIMITED TO LOST PROFITS) ARISING OUT OF OR RELATED TO THIS PUBLICATION OR THE INFORMATION CONTAINED IN IT, EVEN IF DASSAULT SYSTÈMES AND ITS AFFILIATES HAVE BEEN ADVISED OF THE POSSIBILITY OF SUCH DAMAGES.

Reqtify is trademark or registered trademark of Dassault Systèmes or its subsidiaries, in the US and/or other countries.

All other trademarks are the property of their respective owners.

Copyright © 2001-2015 Dassault Systèmes.

Table of Contents

- General Information.....4**
 - Platform Availability4**
 - System Requirement4**
 - Third Party Libraries.....4**
- New Features.....5**
 - Change Tracking.....5**
- Updated Features.....6**
 - Report Editor6**
 - Regular Expression Tester6**
 - Snapshots.....6**
 - Password protection.....6**
- New Interfaces7**
 - ENOVIA Generic Connector7**
 - PTC Integrity10**
 - Redmine10**
 - ZIP file11**
 - EDIF (Electronic Design Interchange Format)11**
- Updated Interfaces12**
 - ENOVIA.....12**
 - ENOVIA Requirements12**
 - CATIA Functional & Logical12**
 - TestLink13**
 - Bugzilla13**
 - HP ALM13**
 - Mathworks Simulink14**
 - Microsoft Visual Studio14**

General Information

Platform Availability

Reqtify is supported on Windows XP/VISTA/7/8/8.1.

System Requirement

Approximately 150 MBytes available hard-disk space.

512 MBytes RAM and 8 MBytes VRAM.

High color (16-bits or 65536 colors) at resolution 1024x768 or 1280x1024.

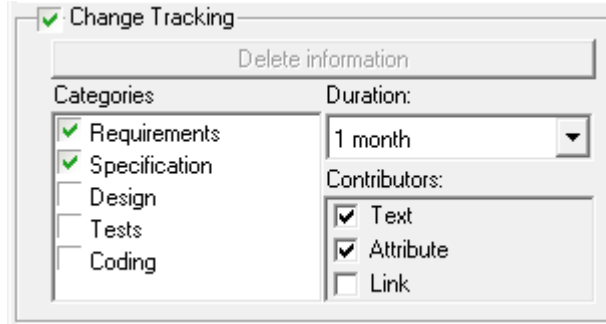
Third Party Libraries

FOP	Generate PDF documents	http://xmlgraphics.apache.org/fop/license.html
libjpeg	JPEG image read/write	http://src.chromium.org/viewvc/chrome/trunk/src/third_party/libjpeg/LICENSE?view=markup
libpng	PNG image read/write library	http://libpng.org/pub/png/src/libpng-LICENSE.txt
MiniZip	Zip files manipulation.	http://www.winimage.com/zLibDll/unzip11.zip
PCRE	regular expression analysis	http://www.pcre.org/licence.txt
PDFBox	PDF file analysis	http://www.apache.org/licenses/LICENSE-2.0
SQLite	SQLite DB access	http://www.sqlite.org/copyright.html
zlib	Compression	http://www.gzip.org/zlib/zlib_license.html

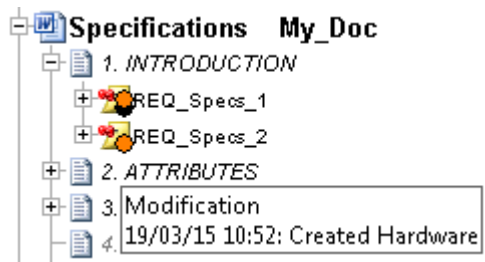
New Features

Change Tracking

Using Reqtify marks, it is now possible to activate a simple change tracking mechanism. After configuring the feature:



Modification marks appear on modified requirements with associated dated texts indicating changes:



Updated Features

Report Editor

A condition can be added to reports to make it visible or not in the main Rectify menu.

Regular Expression Tester

A margin containing line numbers is added to the text analyzing area.

```
1 BEGIN_FILE: SDD_Like.doc:SDD_Like.doc
2 Title Design Document
3 Body Text This document is part of the Multi_Levels exar
4 the tool's data model and is auto-documented. It's so a complemen
5 Body Text This document implements 2 aspects :
6 Body Text · Instead of only references to requirements, th
7 with usual quality process definitions, for example "High level requi
8 Body Text · It uses a dedicated formalism for requirement:
9 Requirement_ID word style. That's why it uses the specific type of
10 Body Text To load Multi_Levels, select File > Open from l
11 Body Text The example is located in the <installation dire
12 Heading 1
13 Heading 1 1. BASIC INFORMATION
14 Requirement_ID REQ_Design_1
15 Requirement_Text Text of the requirement. The requirement here
16 Requirement_Attribute #UADD
```

Snapshots

Snapshot file names contains seconds to be more precise.

Password protection

Instead of requesting password when configuration editor is opened, now this password request is made when writing operation is needed.

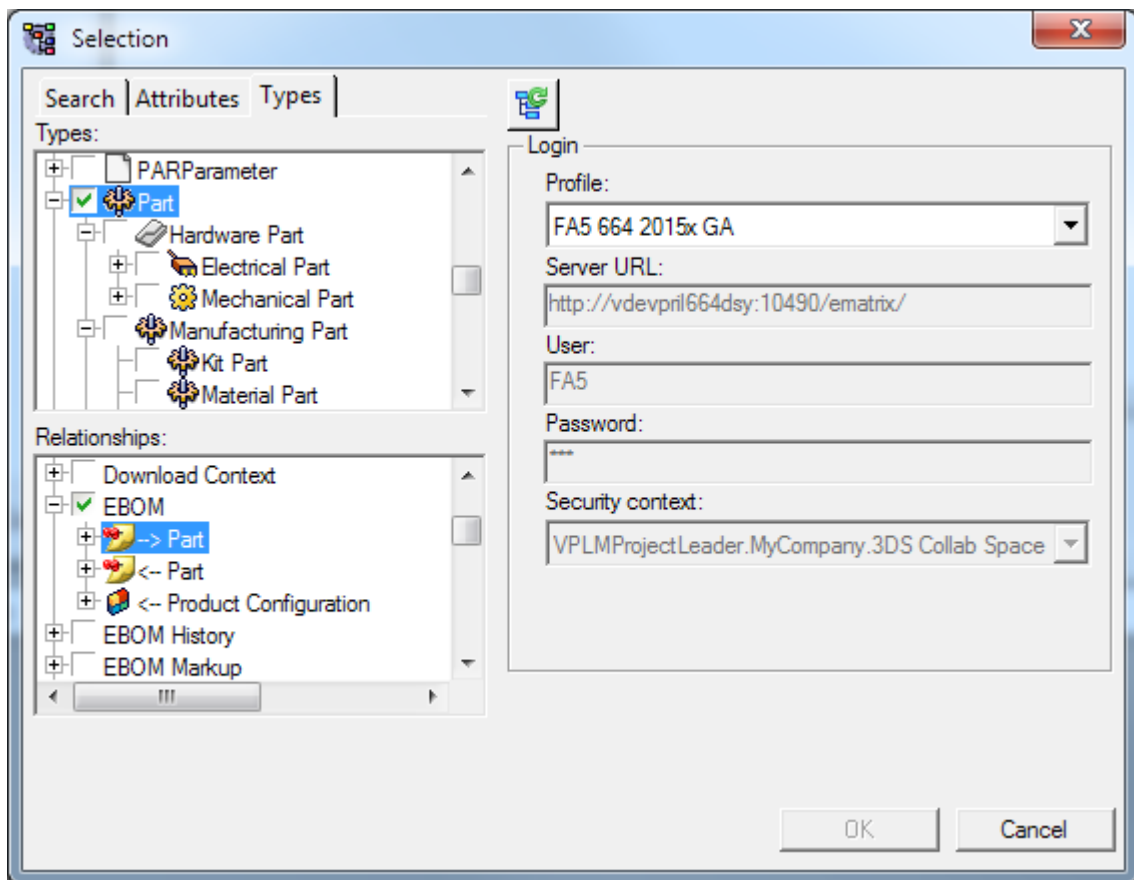
New Interfaces



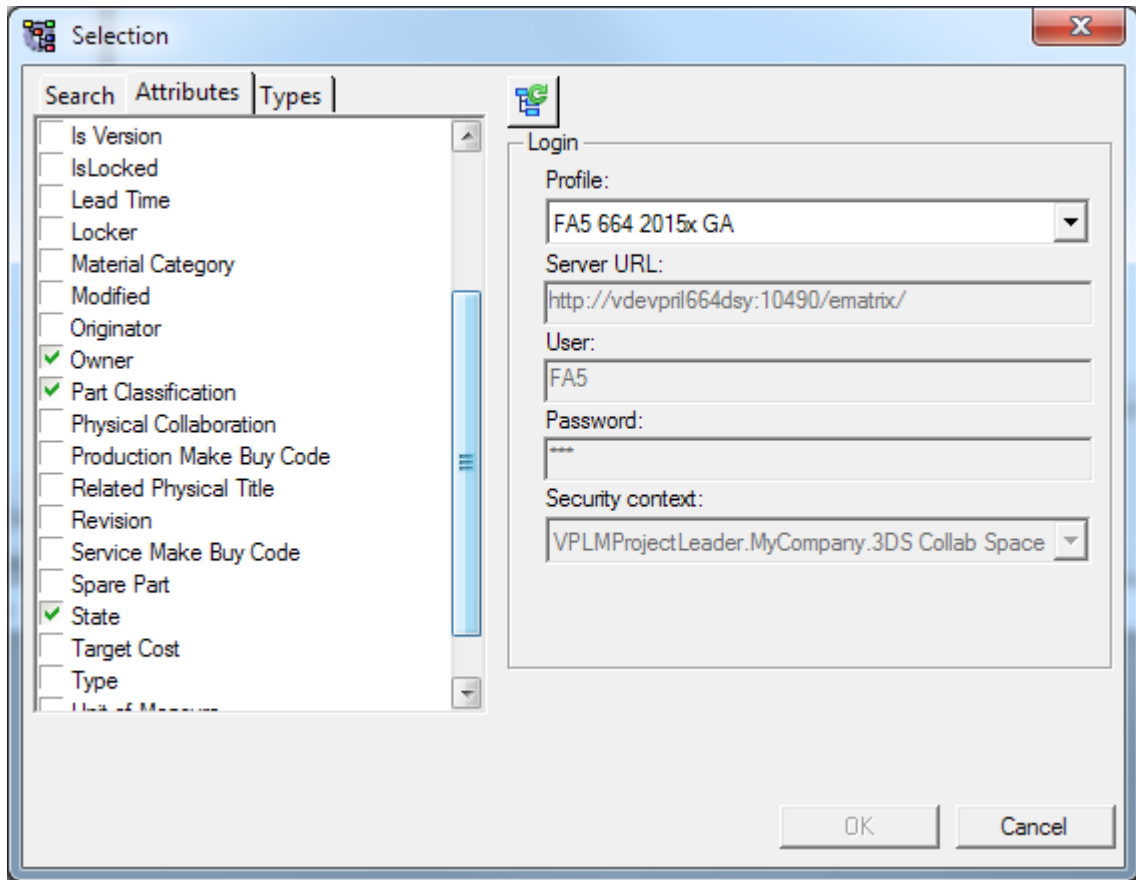
ENOVIA Generic Connector

A generic ENOVIA connector allows analyzing multiple types of ENOVIA data.

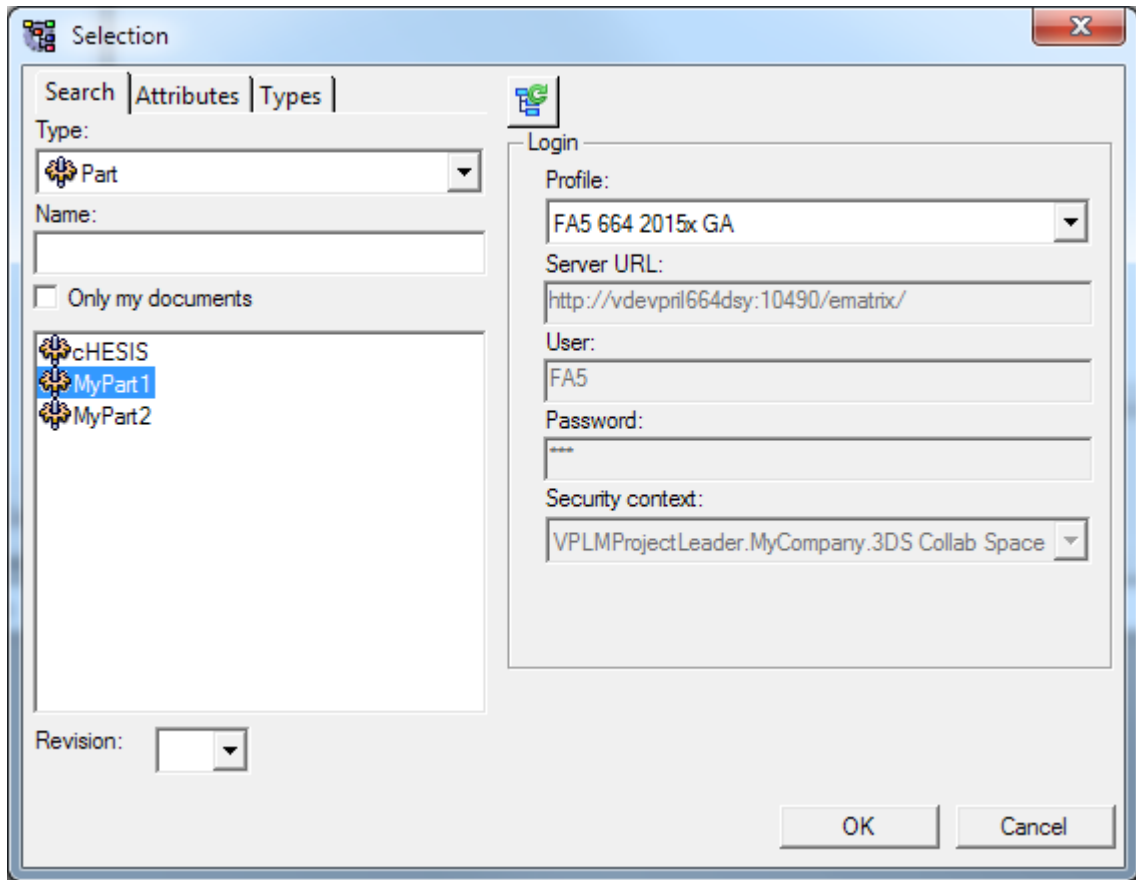
User has to select a root type, relationships and target types. Then attributes can be chosen and finally a selection of a root object is requested. An analysis type is automatically created based on ENOVIA basic type.



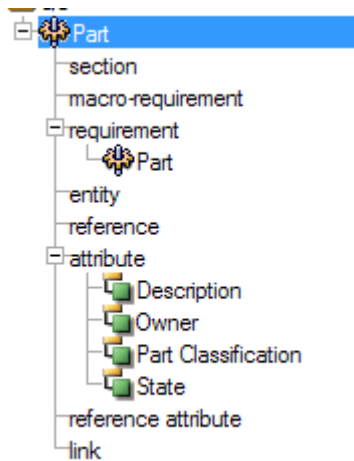
Type selection



Attribute selection



Root selection

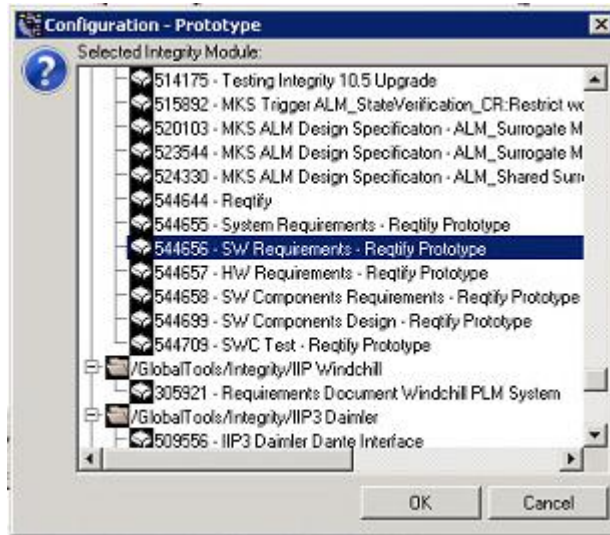


Created type

PTC Integrity



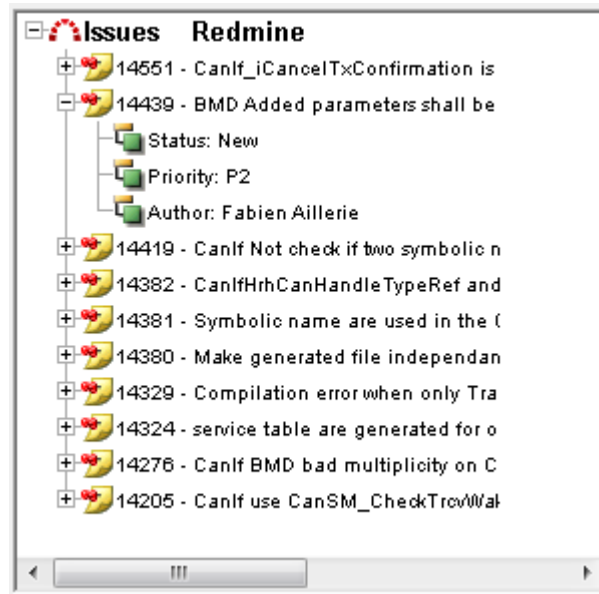
Reqtify support PTC Integrity version 10.x. Reqtify is able to browse PTC Integrity repository, get document contents from PTC Integrity and navigate to PTC Integrity.



Redmine



Reqtify is now linked to Redmine tool. After defining an HTTP connection profile, Redmine coupling enables you to browse Redmine projects.



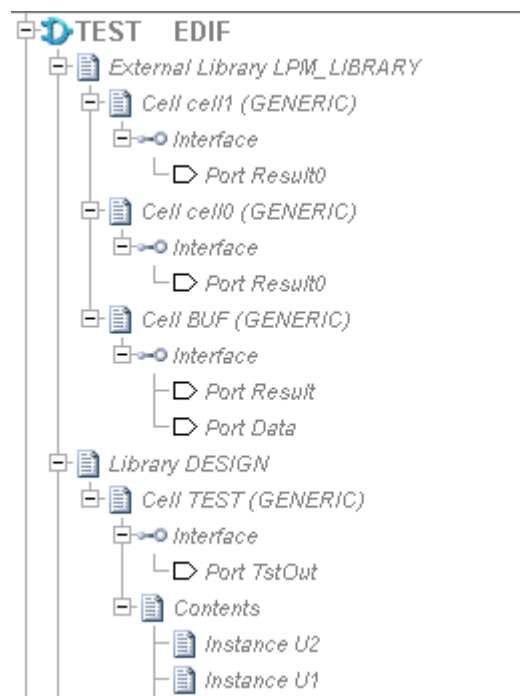


ZIP file

Reqtify can access ZIP contents as an access type.

EDIF (Electronic Design Interchange Format)

Reqtify can extract objects (library, cell, interface, port, instance, ...) from EDIF files.



Updated Interfaces

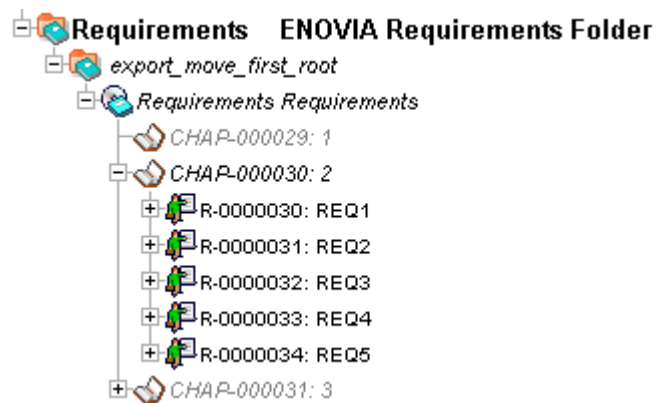
ENOVIA

ENOVIA R2015x is supported.



ENOVIA Requirements

Requirement Specification folders can be analyzed.



CATIA Functional & Logical

When links are created within Reqtify between several Functional and Logical components, they can be created into ENOVIA.



TestLink

A direct connection to TestLink is available instead of simple file exchange. An HTTP profile must be defined to access TestLink project.



Bugzilla

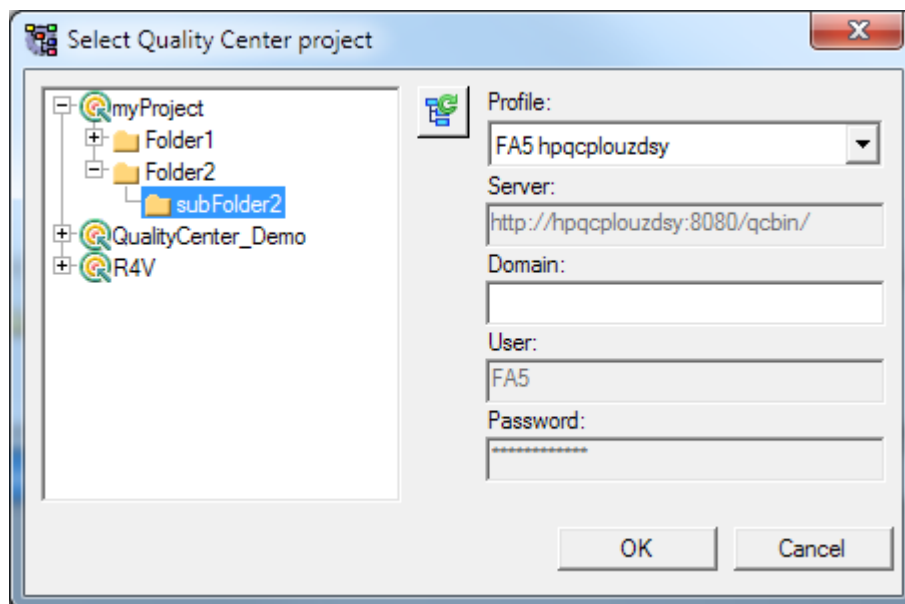
Rectify support Bugzilla 4.0 and higher version. Profile information are now Bugzilla credential instead of Bugzilla database information.



HP ALM

When selecting a folder during export, it is possible to browse huge folder tree.

It is now possible to select a test plan folder instead of the entire test plan.





Mathworks Simulink

Reqtify support Simulink traceability made in external .req file.



Microsoft Visual Studio

Reqtify supports Visual Studio 2012 and can be set as default text editor.

